

TRK

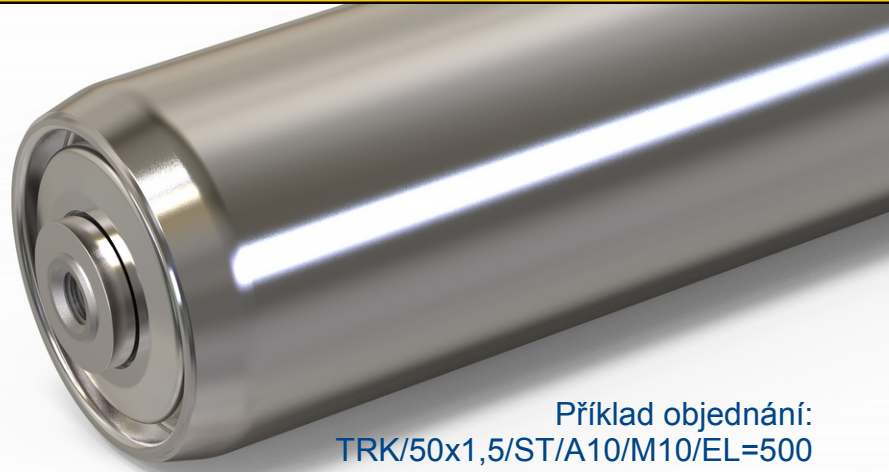
Ocelové válečky

- Max. zatížení 240kg
- Max. rychlost 1,2m/s
- Tepl. odolnost -30 až +80°C

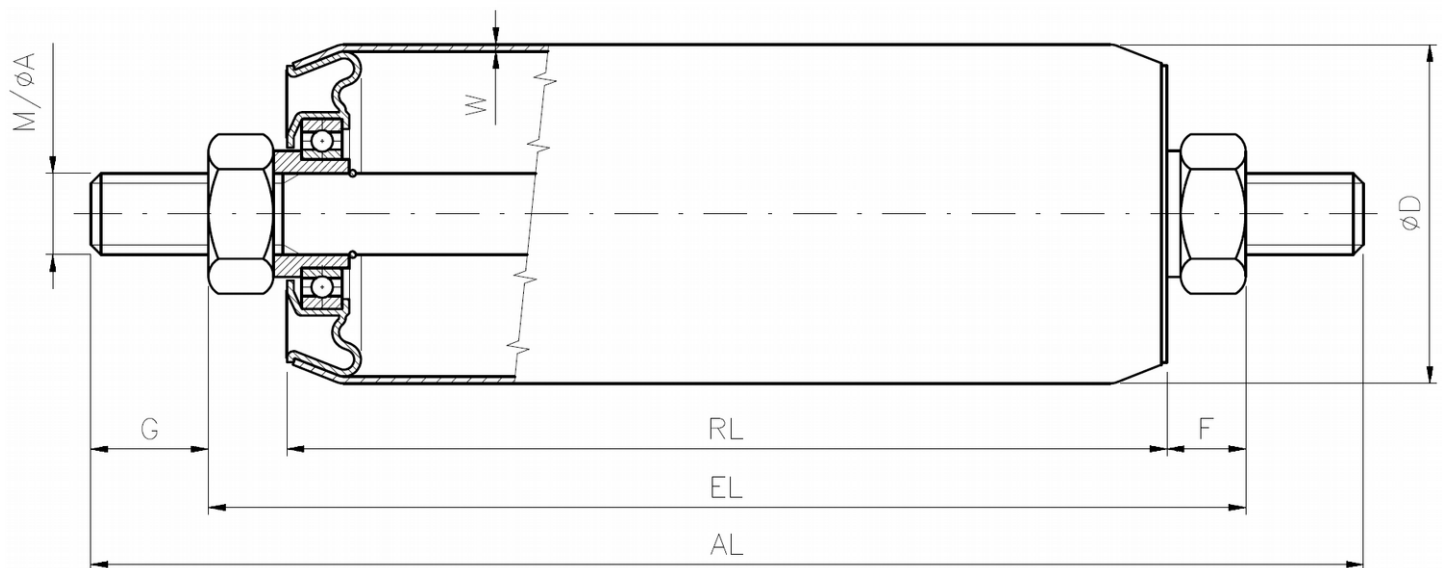
- Trubka: přesná ocelová

- Čelo: plechový výlisek s jednořadým kuličkovým ložiskem 6003, 6202 (alt. ZZ,RS)

- Užití: poháněné a nepoháněné, válečkové, pasové dopravníky, klidnější chod než TRG



Příklad objednání:
TRK/50x1,5/ST/A10/M10/EL=500



| Označení | DxW | Ø A hřídele | M | | | IGM | | FA | | SW | | |
|-----------------------|--------|----------------|-----|----|------|-----|---|----|---|----|----|---|
| | | | M | G | F | IG | F | G | F | SW | G | F |
| TRK/40x1,5/ST/A12/... | 40x1,5 | 12 | M12 | 15 | 12 | M8 | 5 | 10 | - | 10 | 10 | 5 |
| TRK/50x1,5/ST/A8/... | 50x1,5 | 8 | M8 | 15 | 11,5 | - | - | 10 | 5 | - | - | - |
| TRK/50x1,5/ST/A10/... | 50x1,5 | 10 | M10 | 15 | 11 | M6 | 5 | 10 | 5 | 8 | 10 | 5 |
| TRK/50x1,5/ST/A12/... | 50x1,5 | 12 | M12 | 15 | 12 | M8 | 5 | 10 | 5 | 10 | 10 | 5 |
| TRK/50x1,5/ST/A14/... | 50x1,5 | 14 | M14 | 20 | 13 | M10 | 5 | 10 | 5 | 12 | 10 | 5 |
| TRK/50x1,5/ST/A15/... | 50x1,5 | 15 | M15 | 20 | 13 | M10 | 5 | 10 | 5 | 12 | 10 | 5 |
| TRK/50x1,5/ST/A17/... | 50x1,5 | 17 | M16 | 20 | 13 | M12 | 5 | - | - | 14 | 10 | 5 |
| TRK/50x2/ST/A8/... | 50x2,0 | 8 | M8 | 15 | 11,5 | - | - | 10 | 5 | - | - | - |
| TRK/50x2/ST/A10/... | 50x2,0 | 10 | M10 | 15 | 11 | M6 | 5 | 10 | 5 | 8 | 10 | 5 |
| TRK/50x2/ST/A12/... | 50x2,0 | 12 | M12 | 15 | 12 | M8 | 5 | 10 | 5 | 10 | 10 | 5 |
| TRK/50x2/ST/A14/... | 50x2,0 | 14 | M14 | 20 | 13 | M10 | 5 | 10 | 5 | 12 | 10 | 5 |
| TRK/50x2/ST/A15/... | 50x2,0 | 15 | M15 | 20 | 13 | M10 | 5 | 10 | 5 | 12 | 10 | 5 |
| TRK/50x2/ST/A17/... | 50x2,0 | 17 | M16 | 20 | 13 | M12 | 5 | - | - | 14 | 10 | 5 |
| TRK/60x2/ST/A10/... | 60x2,0 | 10 | M10 | 15 | 11 | M6 | 5 | 10 | 5 | 8 | 10 | 5 |
| TRK/60x2/ST/A12/... | 60x2,0 | 12 | M12 | 15 | 12 | M8 | 5 | 10 | 5 | 10 | 10 | 5 |
| TRK/60x2/ST/A14/... | 60x2,0 | 14 | M14 | 20 | 13 | M10 | 5 | 10 | 5 | 12 | 10 | 5 |
| TRK/60x2/ST/A15/... | 60x2,0 | 15 | M15 | 20 | 13 | M10 | 5 | 10 | 5 | 12 | 10 | 5 |
| TRK/60x2/ST/A17/... | 60x2,0 | 17 | M16 | 20 | 13 | M12 | 5 | - | - | 14 | 10 | 5 |
| TRK/80x2/ST/A12/... | 80x2,0 | 12 | M12 | 15 | 12 | M8 | 5 | 10 | 5 | 10 | 10 | 5 |
| TRK/80x2/ST/A14/... | 80x2,0 | 14 | M14 | 20 | 13 | M10 | 5 | 10 | 5 | 12 | 10 | 5 |
| TRK/80x2/ST/A15/... | 80x2,0 | 15 | M15 | 20 | 13 | M10 | 5 | 10 | 5 | 12 | 10 | 5 |
| TRK/80x2/ST/A17/... | 80x2,0 | 17 | M16 | 20 | 13 | M12 | 5 | - | - | 14 | 10 | 5 |